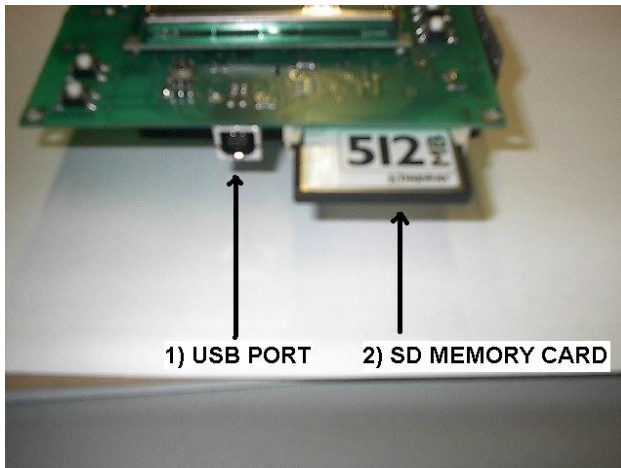


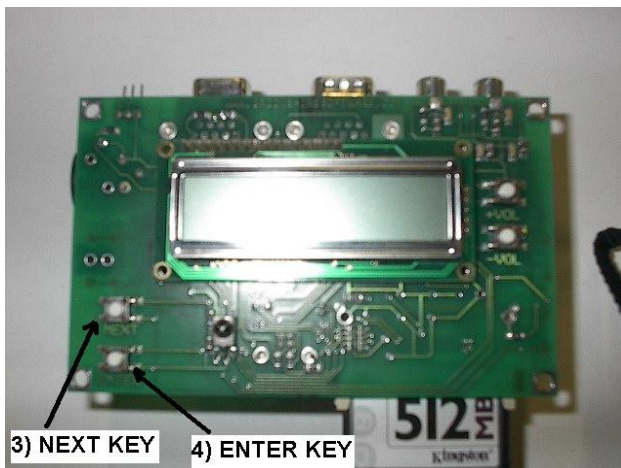
RAPU
Remote Advanced Playback Unit

Overview RAPU

The Rapu is used to store and play routines that are created with Visual Show Automation (VSA). The RAPU is equipped with a 2GB SD memory card used to store or play the routines.

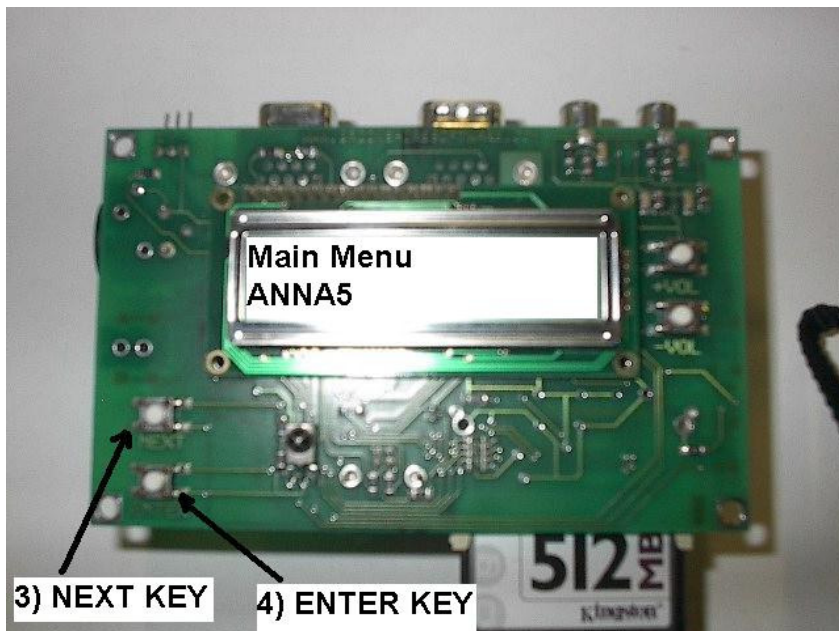


- 1) USB Port used to send routines to the RAPU.
- 2) SD Memory card used to store routines.



- 3) Next Key.
- 4) Enter Key.

PLAYING ROUTINE



The LCD display will show Main Menu and the file name that was used to save the routine onto the RPU SD memory card. Press the Next Key to cycle through the menu system. Press the Enter Key to play the routine.

3) Next Key.

5) Enter Key.

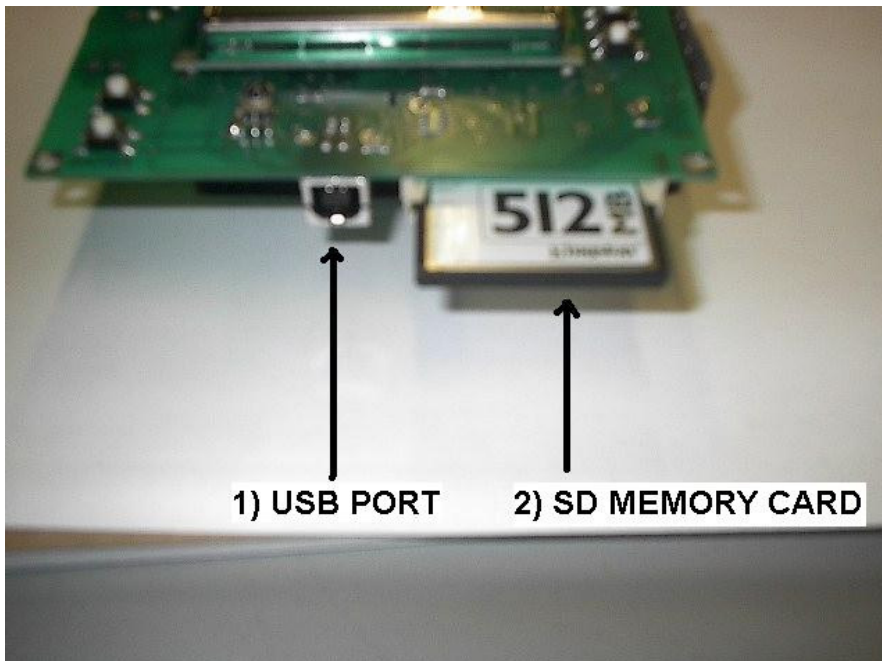
STORE ROUTINE

To store a routine created with Visual Show Automation (VSA), the following will be required.

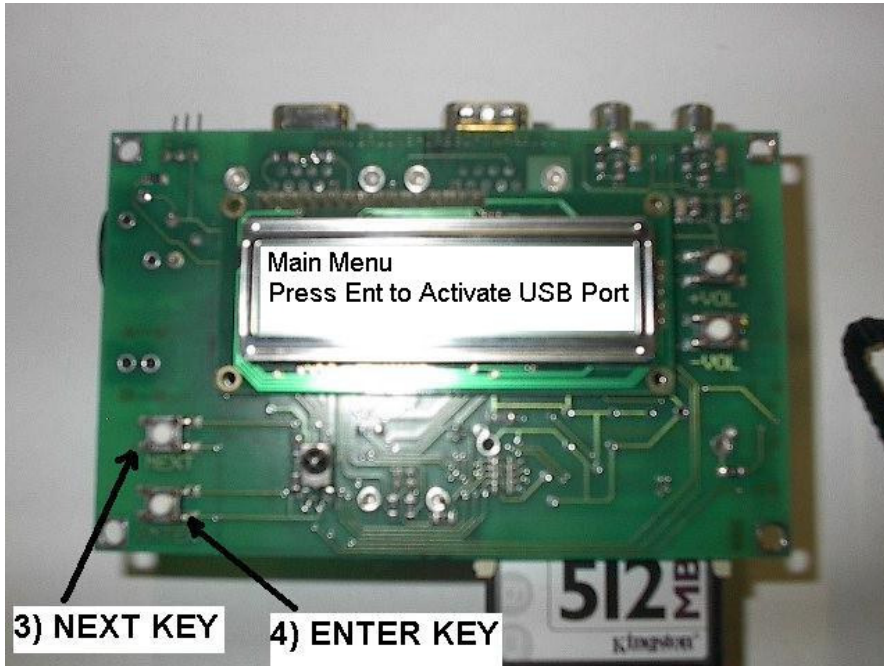
- 1) PC or Laptop with a USB port and Windows XP.
- 2) RPU Manager Ver1.1
- 3) USB Cable.

Installation of the RPU Manager software will automatically install the drivers for the USB port also reboot the computer after installation of the RPU Manager.

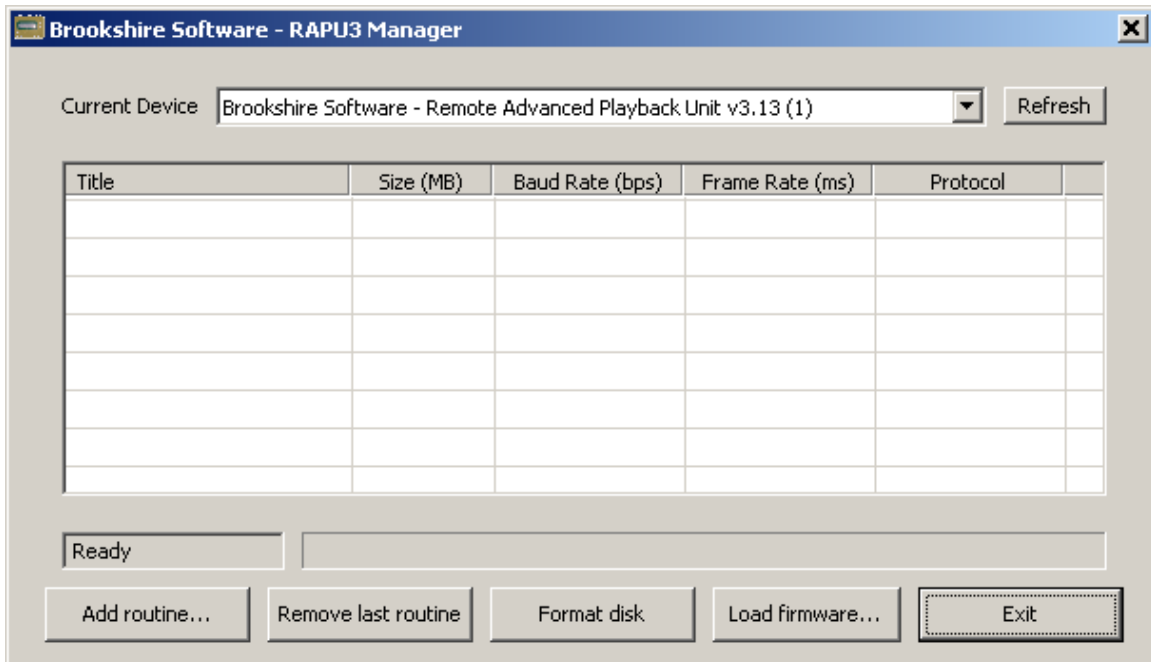
Plug in the USB cable into the computer and the RPU hardware.



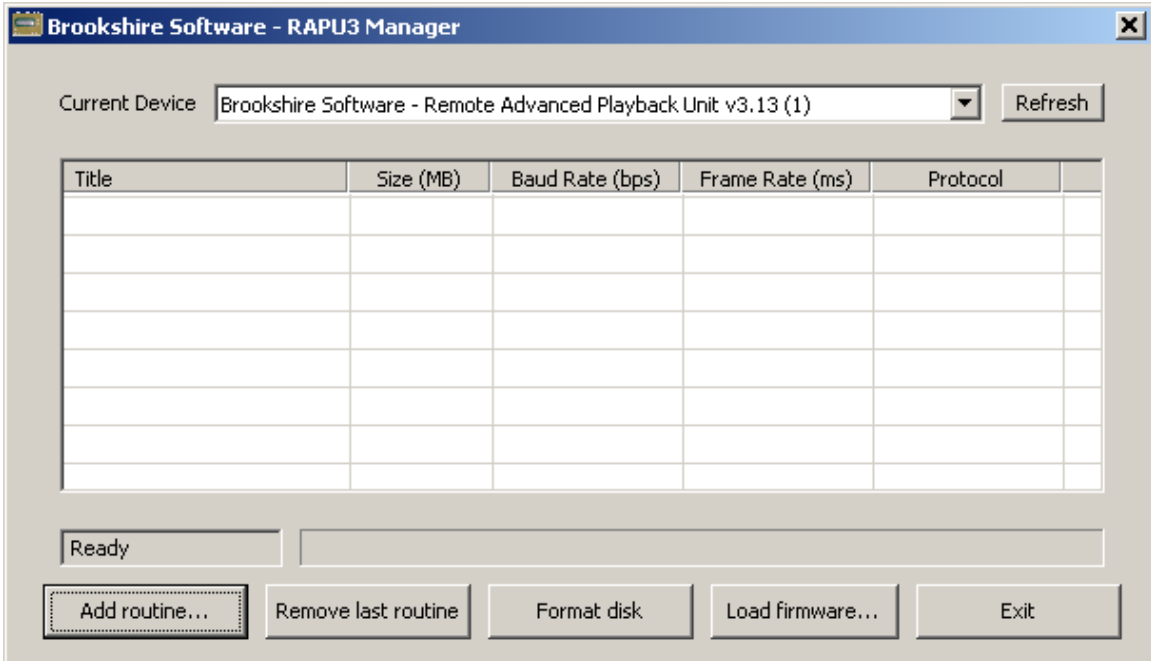
Launch the RPU Manager software and pressing the Next Key on the RPU hardware select to Active USB port.



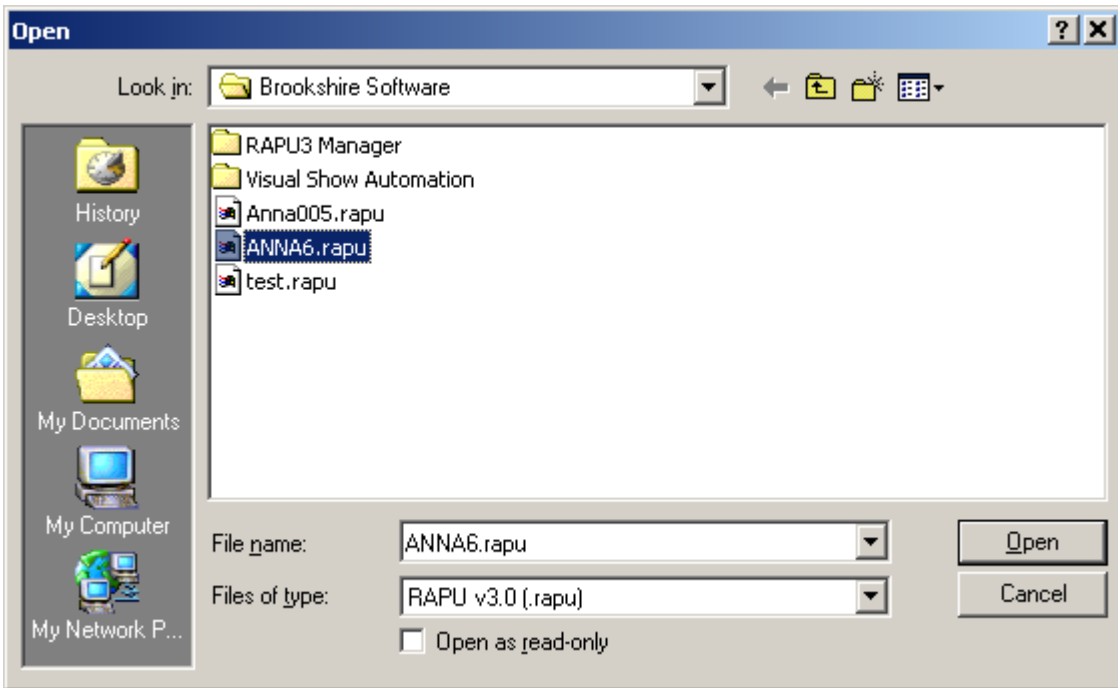
Press the Enter Key on the RPU hardware to activate the USB Port. Windows XP will automatically detect and install the drivers for the USB port.



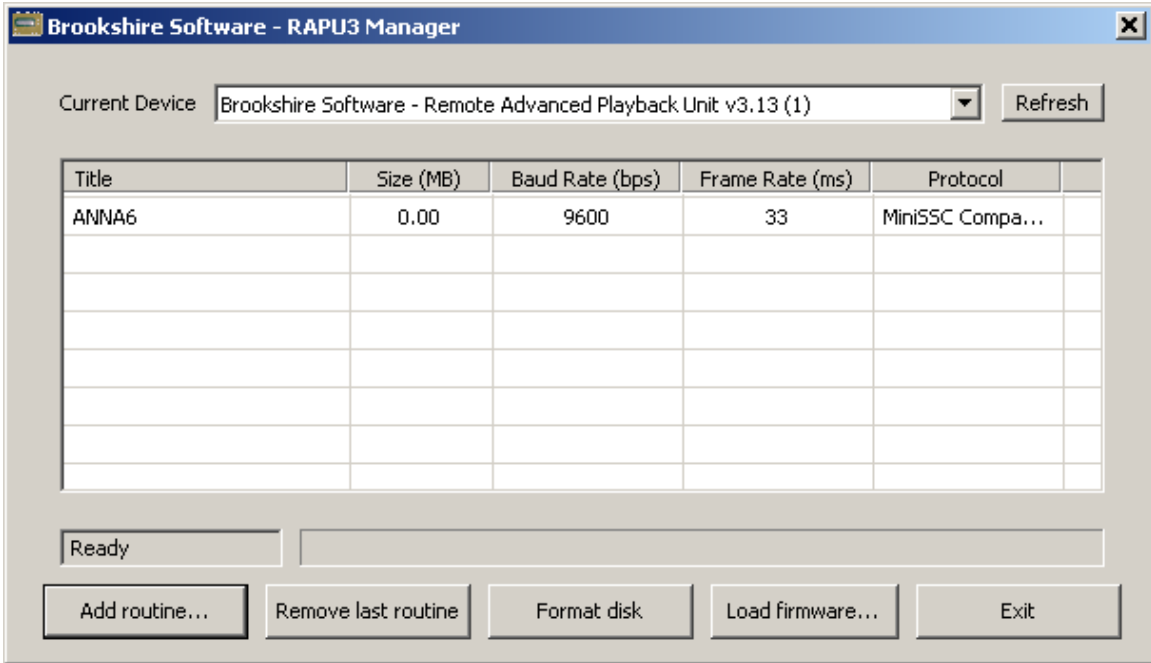
Current Device should show Remote Advanced Playback Unit vx.xx



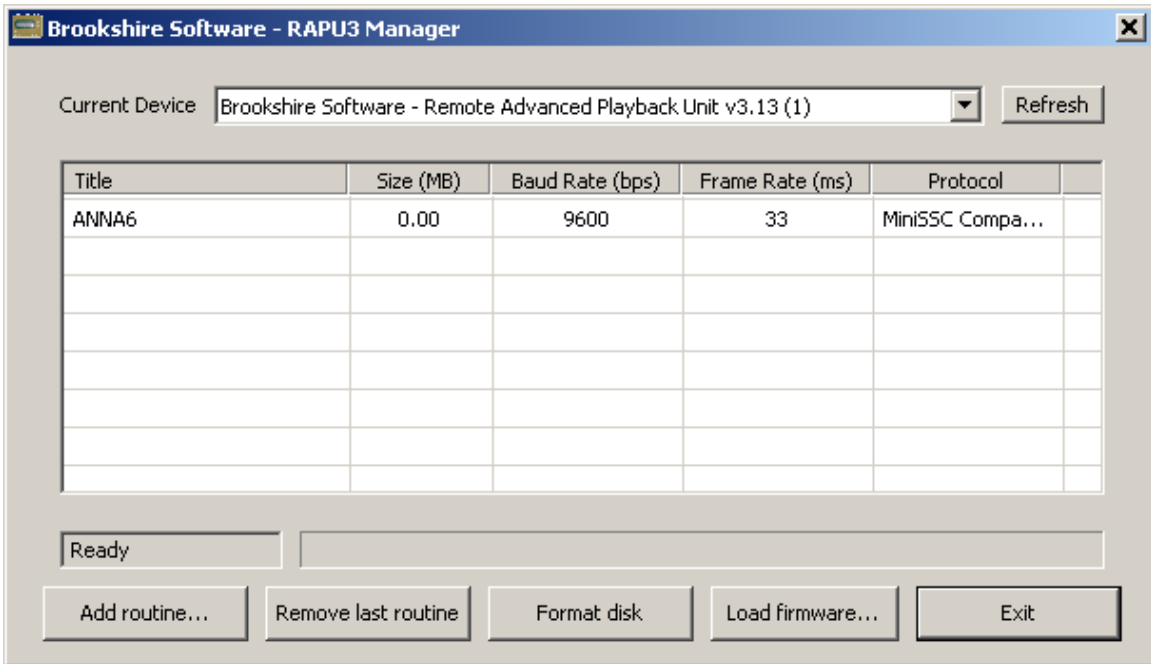
Click Add routine push button.



Open file window will appear to choose the directory and filename you would like to store into the RAPU memory card. Click Open to send the file.



Once Click Open has been clicked, the RAPU Manager will display the filename.



Click Exit to finish the RAPU Manager session. The file is now saved on the RAPU memory card and now can be played.