



SHELLEY  
MEDICAL  
IMAGING  
TECHNOLOGIES

*Sales Office*

London, Ontario, Canada

Phone: 1 (519) 690-0874

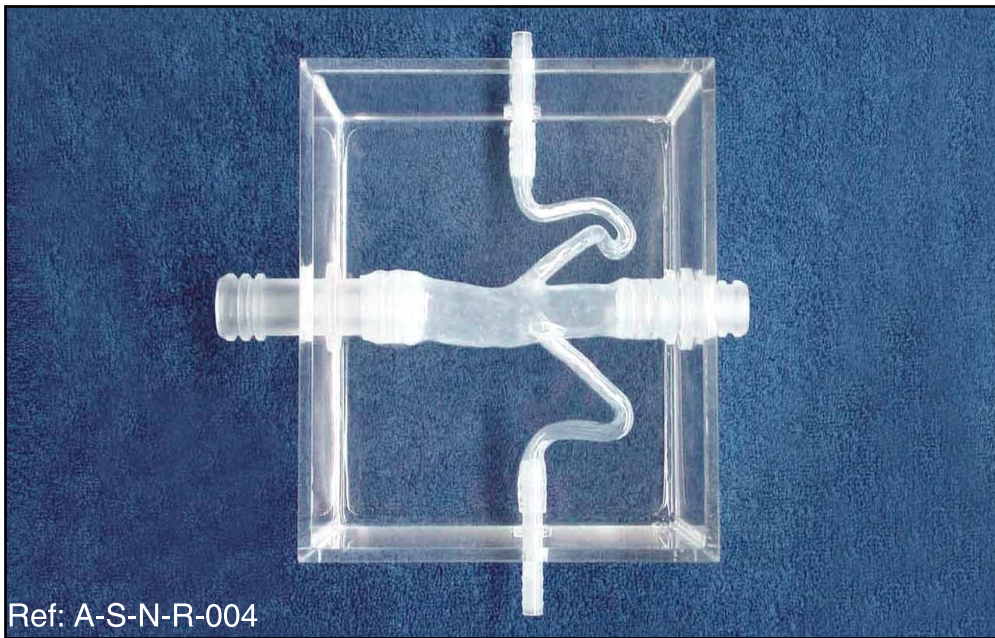
Fax: 1 (519) 690-0875

Email: sales@simutec.com

Web: www.simutec.com

# Renal arteries, 30°, 60°, 90°

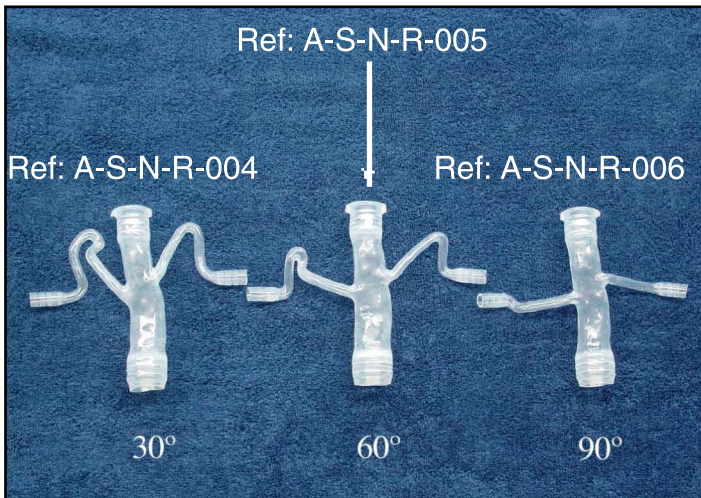
Ref: A-S-N-R-004=>006



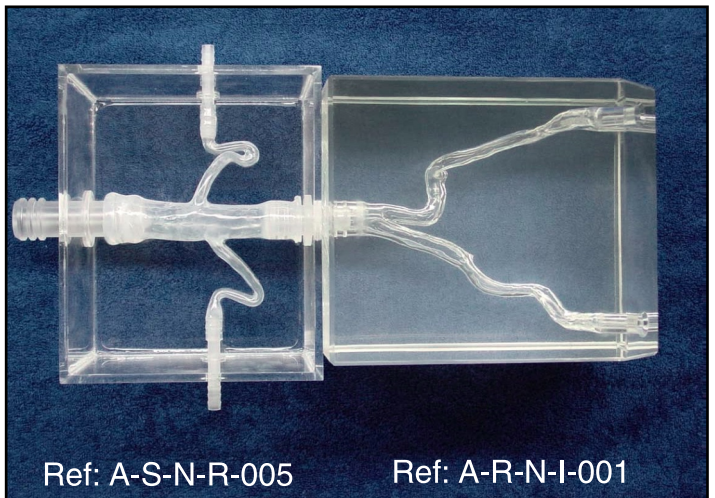
30° angulation of the renal arteries of the ostial stenosis with abdominal rigid normal iliac. To be used with the abdominal rigid normal iliac 001 block (Ref: A-R-N-I-001).

Ref: A-S-N-R-004

ELASTRAT in vitro models respect human anatomy and are designed for the development and demonstration of stents, coils and catheters. They provide a realistic environment for the simulation of endovascular procedures, pre-surgery training, studies and teaching purposes for interventionists.



30°, 60°, 90° angulation available. Those models also fit the the A-S-N-001 abdominal model.



Combination of the “Renal artery” model (Ref: A-S-N-R-005) with the “introducer” (Ref: A-R-N-I-001)

Our Elastrat in vitro models are compatible with modern imaging modalities such as digital subtraction angiography, computed tomography and magnetic resonance imaging. Providing the use of an adequate circulating fluid, Doppler techniques can also be performed. The in vitro models transparency to light makes them suitable for video and photographic monitoring.

