



SHELLEY
MEDICAL
IMAGING
TECHNOLOGIES

Sales Office

London, Ontario, Canada

Phone: 1 (519) 690-0874

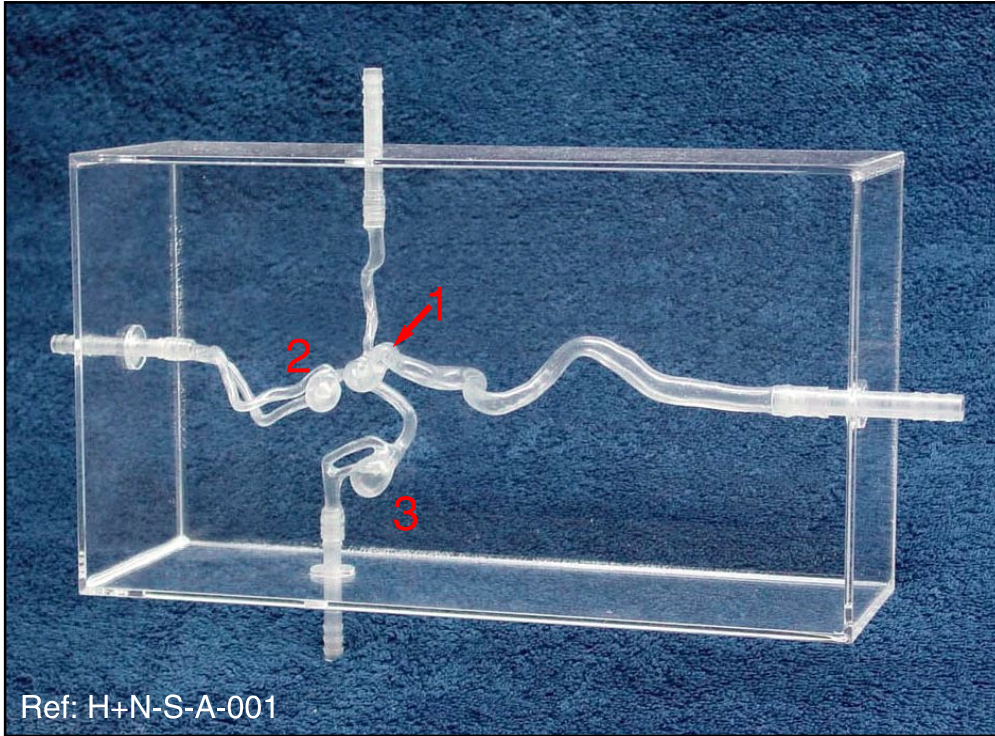
Fax: 1 (519) 690-0875

Email: sales@simutec.com

Web: www.simutec.com

Right internal carotid artery model with three aneurysms

Ref: H+N-S-A-001



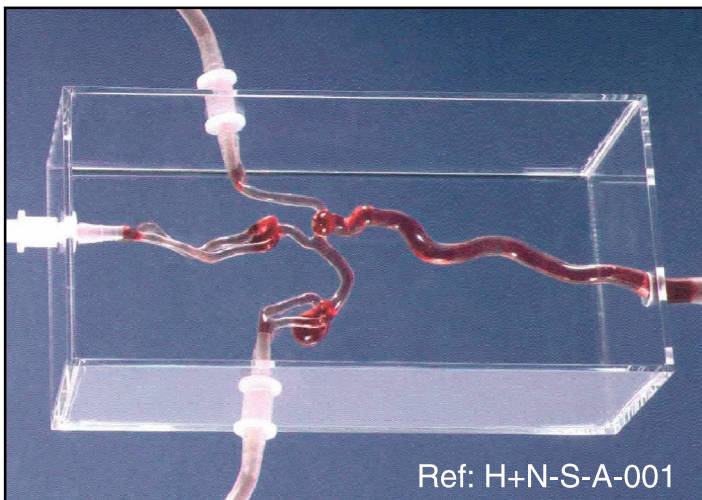
Right internal carotid artery model with three aneurysms.

Aneurysm #1
ø7.5mm, length 9mm, neck 3.5-4.5mm, ø artery 4mm

Aneurysm #2
ø10mm, length 12mm, neck 4-6mm, ø artery 3mm

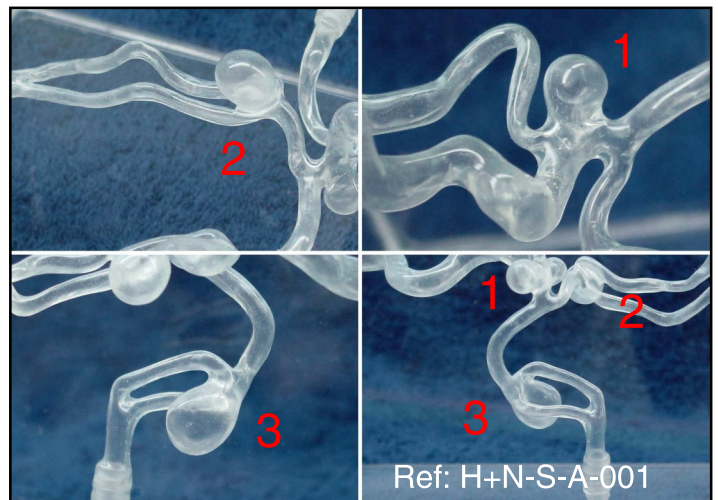
Aneurysm #3
ø10x11.5mm, length 15mm, neck 4-6mm, ø artery 3mm

ELASTRAT in vitro models respect human anatomy and are designed for the development and demonstration of stents, coils and catheters. They provide a realistic environment for the simulation of endovascular procedures, pre-surgery training, studies and teaching purposes for interventionalists.



Ref: H+N-S-A-001

Example of hemodynamic tests.



Ref: H+N-S-A-001

The aneurysms one and two are quite round, while number three is almost 50% longer than its diameter.

Our Elastrat in vitro models are compatible with modern imaging modalities such as digital subtraction angiography, computed tomography and magnetic resonance imaging. Providing the use of an adequate circulating fluid, Doppler techniques can also be performed. The in vitro models transparency to light makes them suitable for video and photographic monitoring.

