



SHELLEY  
MEDICAL  
IMAGING  
TECHNOLOGIES

*Sales Office*

London, Ontario, Canada

Phone: 1 (519) 690-0874

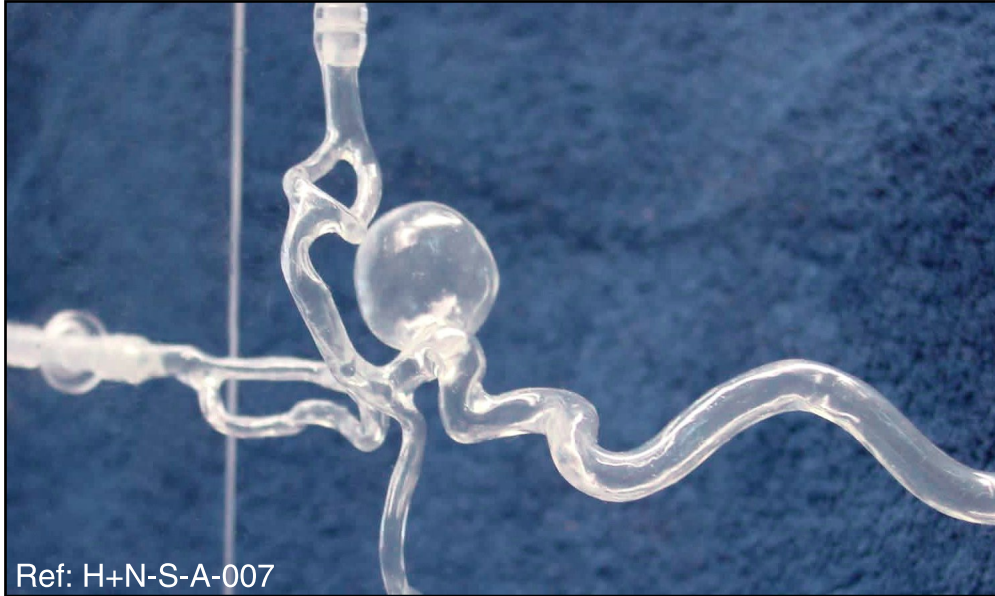
Fax: 1 (519) 690-0875

Email: sales@simutec.com

Web: www.simutec.com

# Right internal carotid artery model with giant aneurysm

Ref: H+N-S-A-007 and H+N-S-A-008



Right internal carotid artery model with giant aneurysm. Narrow neck for H+N-S-A-007, wide neck for H+N-S-A-008.

ELASTRAT in vitro models respect human anatomy and are designed for the development and demonstration of stents, coils and catheters. They provide a realistic environment for the simulation of endovascular procedures, pre-surgery training, studies and teaching purposes for interventionists.

Ref: H+N-S-A-007



Ref: H+N-S-A-007

Narrow neck model.  
Aneurysm  $\varnothing$ 23mm, length 27mm, neck 5.7x8.2mm.



Ref: H+N-S-A-008

Wide neck model.  
Aneurysm  $\varnothing$ 25mm, length 28mm, neck 6.0x16.5mm.

Our Elastrat in vitro models are compatible with modern imaging modalities such as digital subtraction angiography, computed tomography and magnetic resonance imaging. Providing the use of an adequate circulating fluid, Doppler techniques can also be performed. The in vitro models transparency to light makes them suitable for video and photographic monitoring.

**ELASTRAT**  
Sarl  
Product Line