



SHELLEY
MEDICAL
IMAGING
TECHNOLOGIES

Sales Office

London, Ontario, Canada

Phone: 1 (519) 690-0874

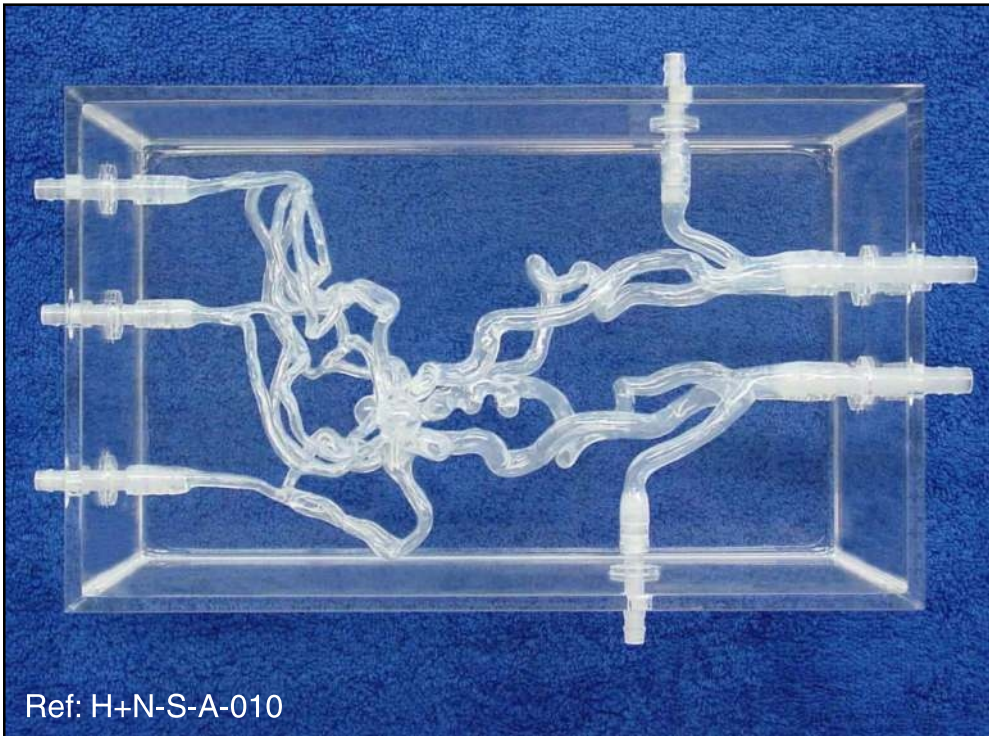
Fax: 1 (519) 690-0875

Email: sales@simutec.com

Web: www.simutec.com

Anterior and posterior circulations model with or without anterior communicating artery aneurysm.

Ref: H+N-S-A-010 or H+N-S-N-010

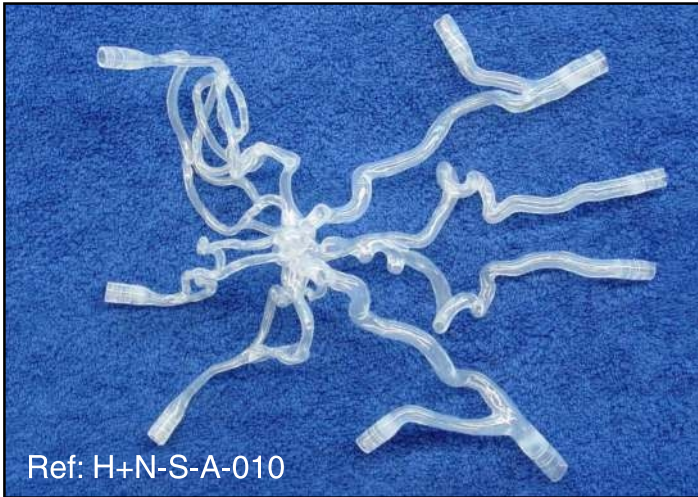


Ref: H+N-S-A-010

The picture on the left shows our modified H+N-R-A-002 model in its soft version with 6 aneurysms added to its network of arteries for evaluation purposes.

Aneurysm and stenoses placements can be customized to suit your individual needs.

Asymmetry of A1 segments is known as a predisposing factor for the development of saccular aneurysms in clinical practice. The presence of this variant in the in vitro model adds to the realism of the aneurysmal disease simulation.



Ref: H+N-S-A-010



Ref: H+N-S-A-010

Elastra in vitro models respect human anatomy and provide a realistic environment for the development of new products, the simulation of endovascular procedures, pre surgery training, studies and teaching purposes.

ELASTRAT in vitro models are compatible with modern imaging modalities such as digital subtraction angiography, computed tomography and magnetic resonance imaging. Providing the use of an adequate circulating fluid, Doppler techniques can also be performed. The in vitro models transparency to light makes them suitable for video and photographic monitoring.

ELASTRAT
Product Line