



SHELLEY  
MEDICAL  
IMAGING  
TECHNOLOGIES

Sales Office

London, Ontario, Canada

Phone: 1 (519) 690-0874

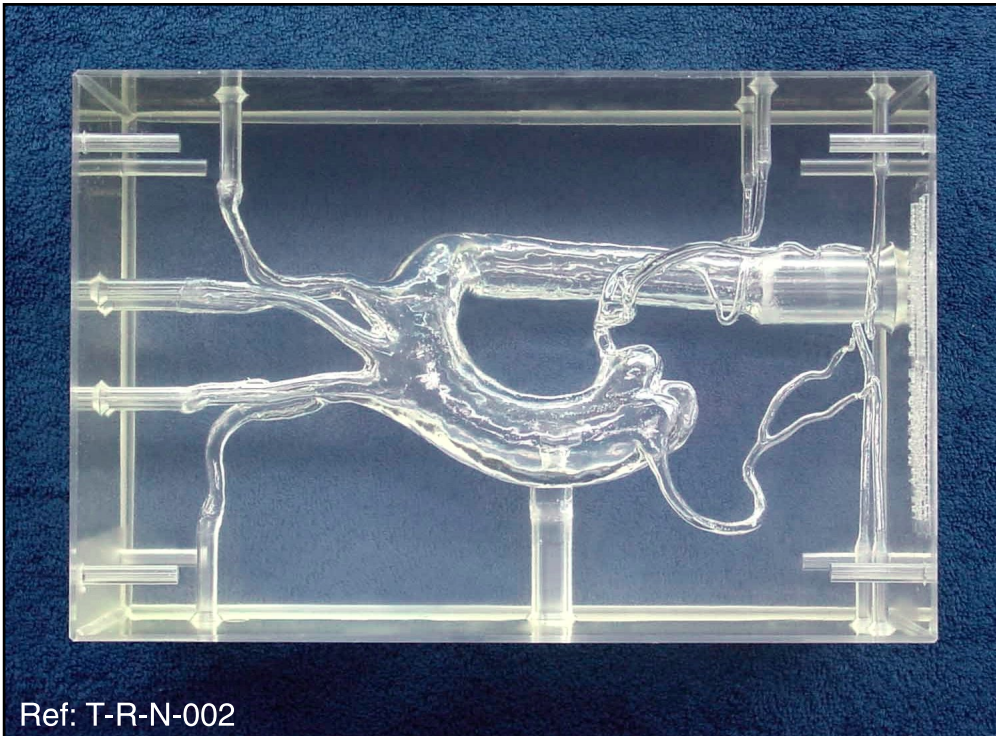
Fax: 1 (519) 690-0875

Email: sales@simutec.com

Web: www.simutec.com

# Rigid aortic arch

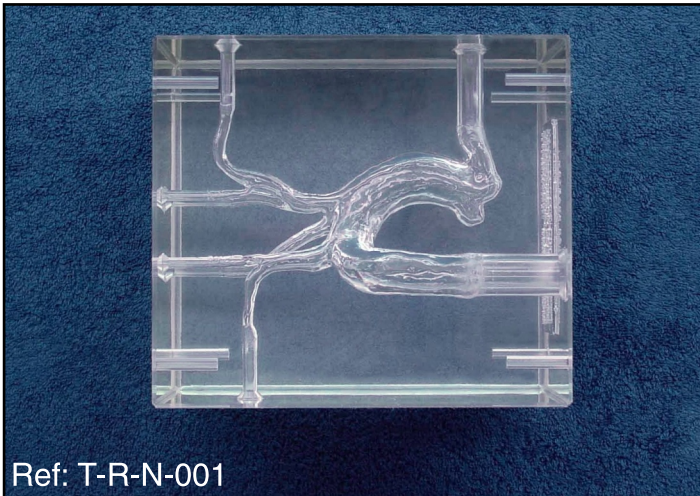
Ref: T-R-N-001 and T-R-N-002



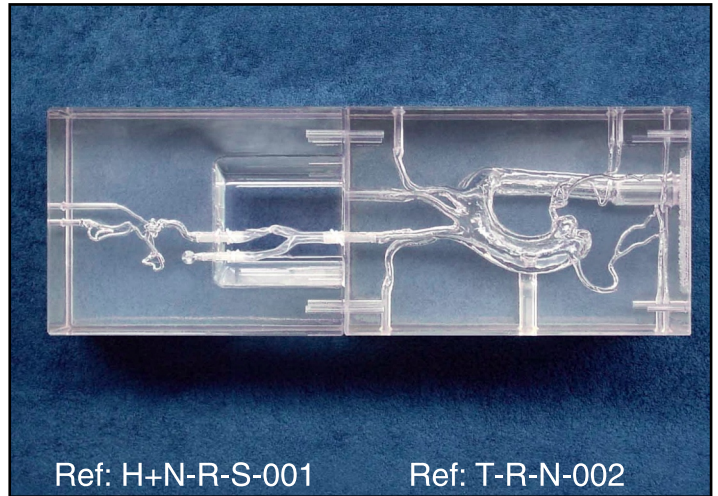
This model corresponds to the normal aortic arch model (Ref. T-R-N-001) with the addition of the left and right coronary arteries. The right coronary artery includes the marginal and posterior interventricular arteries, the left coronary artery includes the left anterior interventricular and the circumflex arteries.

Ref: T-R-N-002

ELASTRAT in vitro models respect human anatomy and are designed for the development and demonstration of stents, coils and catheters. They provide a realistic environment for the simulation of endovascular procedures, pre-surgery training, studies and teaching purposes for interventionists.



Ref: T-R-N-001



Ref: H+N-R-S-001

Ref: T-R-N-002

Rigid Aortic arch model including the brachiocephalic trunk and the proximal segments of both subclavian, vertebral and common carotid arteries.

Combination of the “window” model (Ref: H+N-R-S-001) for stenosis and the aortic arch with coronaries (Ref: T-R-N-002)

Our Elastrat in vitro models are compatible with modern imaging modalities such as digital subtraction angiography, computed tomography and magnetic resonance imaging. Providing the use of an adequate circulating fluid, Doppler techniques can also be performed. The in vitro models transparency to light makes them suitable for video and photographic monitoring.

