



S H E L L E Y  
M E D I C A L  
I M A G I N G  
T E C H N O L O G I E S

Sales Office

London, Ontario, Canada

Phone: 1 (519) 690-0874

Fax: 1 (519) 690-0875

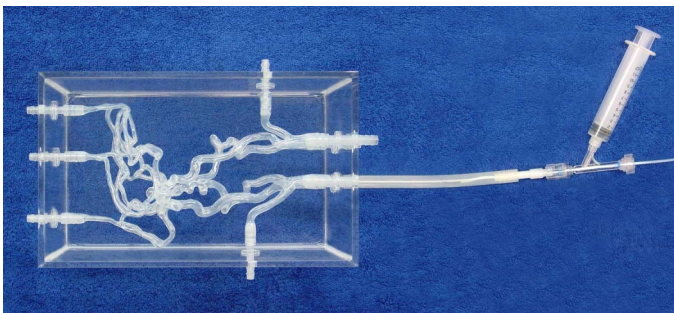
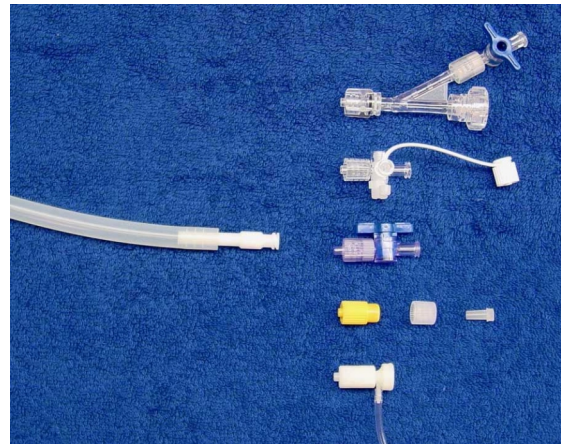
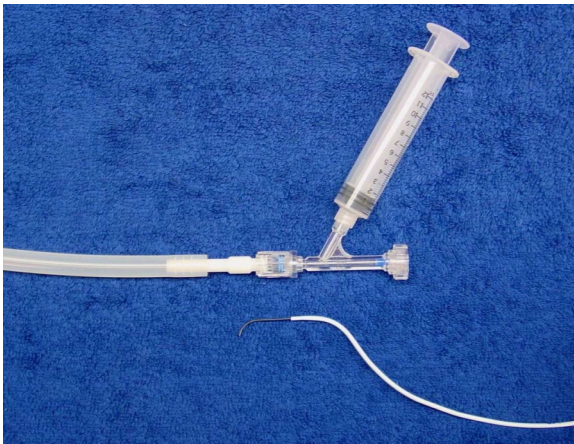
Email: [sales@simutec.com](mailto:sales@simutec.com)

Web: [www.simutec.com](http://www.simutec.com)

## Introducer Luer 10F



Luer introducer lets you adapt all your Luer devices, up to 10F to our family of models.



You can easily introduce your catheters, syringes, or Luer adapters without any leakage. Connects to 5/8 and 6/10mm tubes. (Accessories not included).

See also Introducer 24F technical sheet for larger catheters up to 24F.

ELASTRAT in vitro models are compatible with modern imaging modalities such as digital subtraction angiography, computed tomography and magnetic resonance imaging. Providing the use of an adequate circulating fluid, Doppler techniques can also be performed. The in vitro models transparency to light makes them suitable for video and photographic monitoring.

**ELASTRAT**  
Product Line